

Student & Participant Handbook

wherever
we're
needed

Aspen Medical Training Student & Participant Handbook

Certified



Corporation



FS 540912

EMS 577933

OHS 577934

Table of Contents

Student & Participant Handbook	1
Student & Participant Handbook	5
Purpose of this document.....	5
Provider Details.....	5
Course information	6
Unique Student Identifier	6
Do you need a USI?.....	6
Course Fees and other charges	7
Refund Policy and Cancellation.....	8
Guarantee of Training.....	9
Workplace Health and Safety	9
Access and Equity.....	11
Privacy Policy	12
Change of ownership and third-party agreements	12
Learner Data.....	12
Record Management.....	12
Accessing your records.....	13
Complaints and Appeals	13
Training and Assessment Information	14
Diverse Learner Learning Needs	14
Learner Reasonable Adjustments.....	15
Recognition of Prior Learning (RPL)	15
Credit Transfer Policy/National Recognition	16
Competency-Based Training	17
Assessment Processes	17
Validity.....	17
Statement of Authorship	21
Superseded Units/Qualifications.....	21
Issuance of Qualifications	21

Your feedback or survey reports	22
Quality Assurance	22
Industry Consultation	22
Validation and Moderation.....	22
Trainers' Competencies.....	23
Language, Literacy and Numeracy Support.....	23
Welfare and guidance services and client support.....	24
Student Support & Services.....	24
Legislative and Regulatory Responsibilities	25
Work Health and Safety Act 2011.....	25
Privacy Act 1988 – (Australian Privacy Principles)	26
Disability Discrimination Act 1992.....	26
Age Discrimination Act 2004	27
Sex Discrimination Act 1984	27
Racial Discrimination Act 1975.....	27
Copyright Act 1968	28
Fair Work Act 2009.....	28
National Vocational Education and Training Regulator Act 2011	29
Rights and Responsibilities	29
Learner's Rights	29
Learner's Responsibilities	30
Punctuality.....	31
Rules Ensuring Comfort and Convenience for All Learners	31
Medical Problems.....	31
Mobile Phones	31
Learner Misconduct and Disciplinary Procedures	32
Contact Details.....	33
Student Forms and Policies	Annexures

Student & Participant Handbook

Purpose of this document

The information contained in this document has been developed to assist students and participants (Learners) considering undertaking a course with Aspen Medical Pty Ltd RTO #88188 (Aspen Medical Training) to understand their rights and responsibilities. We want to ensure that learners have access to all the relevant information as they embark on their learning experience. This document will help learners make informed decisions and understand how to seek assistance when needed.

Prior to the commencement of a course, you should discuss your individual needs with the trainer/RTO enrolment officer to access the educational and support services outlined in this document. This presents an opportunity to discuss your existing skills and knowledge, allowing the trainer/RTO enrolment officer to provide the best practice training and assessment services.

Our mission is to be a leading training provider for all Australians by providing learners with a high-quality education designed to meet their vocational goals in an efficient, professional, compliant, and safe learning environment.

Aspen Medical Training focuses on providing opportunities for all to access and participate in learning and achieve their learning outcomes. We ensure that our practices are as inclusive as possible and do not prevent any clients from accessing our services. We invite all learners to share our vision, allowing us to continue our significant role in contributing to Australia as a leader in education.

Aspen Medical Training undertakes to always act ethically. All activities of the RTO will be carried out honestly, fairly and accurately - providing value to our clients and learners. Our commitment to continually improve our business allows training programs to be the best they can be and ensures that learners/clients receive value for money.

Before signing an enrolment form, it is essential that you have read this Handbook and understand its contents. If you require assistance, ask our Student Support Officer by emailing training@aspenmedical.com. By completing and submitting the enrolment form, you acknowledge that you have read the Student & Participant Handbook and will abide by the information it contains

Provider Details

Name of RTO: Aspen Medical Pty Ltd

RTO Number: 88188

Phone Number: 1300 559 064

Website: <https://aspenmedical-trainingacademy.com.au/>

ABN: 32105250413

Registration Details: Our scope of training is listed on the National Register. The link to our registration is <https://training.gov.au/Organisation/Details/88188>

As a National VET Regulator (NVR) Registered Training Organisation (RTO), we are required to comply with the Standards for Registered Training Organisations (RTOs) 2015, which guide nationally consistent, high-quality training and assessment services in the vocational education and training system.

Course information

Our [website](#) has a comprehensive range of information about the training we provide. In addition, course-specific information is located on our website for each available course. The course-specific information will provide you with course content, assessments required and vocational outcomes.

Unique Student Identifier

The Unique Student Identifier (USI) is an Australian Government initiative developed for all training learners from 1 January 2015. The USI records all nationally recognised training records and your completed results from that date onwards. The USI will assist you when commencing employment with a new employer or commencing study with a new training organisation.

From 1 January 2015, all learners are required to provide Aspen Medical Training with a verified USI before certification is issued.

The Unique Student Identifier (USI) scheme, enabled by the Student Identifiers Act 2014, allows learners to access a single online record of their VET achievements. The scheme also allows for reliable confirmation of these achievements by employers and other RTOs.

Unless exempt, RTO's must only issue a qualification or statement of attainment to a learner after:

- The learner has provided the RTO with a verified USI, or
- The RTO has applied for a USI on the students' behalf.

A USI gives you access to your online USI account, which is made up of ten numbers and letters. It will look something like this: 3AW88YH9U5.

A USI account will contain all your nationally recognised training records and results from 1 January 2015 onwards. Your results from 2015 will be available in your USI account in 2016. When applying for a job or enrolling in further study, you will often need to provide your training records and results. One of the main benefits of the USI is that you will have easy access to your training records and results throughout your life. You can access your USI account online from a computer, tablet or smart phone anywhere and anytime.

Do you need a USI?

You will need a USI when you enrol or re-enrol in training from 1 January 2015 if you are a:

- student enrolling in nationally recognised training for the first time, for example if you are studying at TAFE or with a private training organisation, completing an apprenticeship or skill set, certificate or diploma course; or
- school student completing nationally recognised training; or
- student continuing with nationally recognised training.

You are a continuing student if you are a student who has already started your course in a previous year (and not yet completed it) and will continue studying after 1 January 2015.

Once you create your USI you will need to give your USI to each training organisation you study with so your training outcomes can be linked, and you will be able to:

- view and update your details in your USI account;
- give your training organisation permission to view and/or update your USI account;
- give your training organisation “view access” to your transcript;
- control access to your transcript; and
- view online and download your training records and results in the form of a transcript which will help you with job applications and enrolment in further training.

If you are an international, overseas or an offshore student please visit usi.gov.au for more information.

While students may create their own USI, our RTO is also able to create USIs for our students. As a part of the enrolment process, we have included on the Enrolment Agreement Form a section for the student to provide their USI, if you do not have a USI in place, we can provide you with a USI Privacy Notice so that we can apply for a USI on the students’ behalf.

For more information, please refer to the following <https://www.usi.gov.au/students> or request more information by emailing training@aspenmedical.com.

Course Fees and other charges

Fees are advertised on our website and are also available on request from your trainer or Student Support Officer by emailing training@aspenmedical.com before enrolling on any course. There are no additional fees associated with your training, except for cancellation fees, GAP Training fees if applicable when undertaking RPL, replacement of resources and where a certificate reprint is requested, in which case a service fee of \$25 + \$10 postage will be charged.

Learners who require replacement of issued learners’ resources or workbooks will be liable for additional charges to cover replacement costs. Charges are currently \$25 + \$10 postage for replacement of resources.

As part of the RTO 2015 Standard, Aspen Medical is required to inform learners considering enrolment of their right to a statutory cooling off period. A statutory cooling off period (10 days) is a period for a consumer to withdraw from a consumer agreement, where that agreement was established through unsolicited marketing or sales tactics. These tactics include door-to-door sales and telemarketing. For

example, a statutory cooling-off period allows a consumer to withdraw from a sales agreement within ten days of signing a sale contract without penalty.

Aspen Medical does not engage in unsolicited marketing or sales tactics; therefore, a statutory cooling-off period does not apply to learners who have enrolled in a program. For the refund option in other circumstances, learners must refer to the refund policy below.

Refund Policy and Cancellation

When you accept a place offered by Aspen Medical Training and pay the fee/s, it means a binding contract is created between you and Aspen Medical Training. Notification of cancellation/withdrawal from unit/s of competency, withdrawal, or deferral from a course of study must be made in writing to Aspen Medical Training.

In the case of cancellation/withdrawal, the following cancellation will apply:

Learners who cancel their enrolment more than seven days before the commencement of a program will be entitled to a full refund of fees paid.

Learners who give the notice to cancel their enrolment less than seven days prior to the commencement of the program may not be entitled to a full refund, depending on the specific circumstances relating to the withdrawal of enrolment.

Cancellation refund schedule (without extenuating circumstances):

<10 working days:

- 75% refund of course fees
- 25% administration fees retained

>10 working days

- Full refund

Learners who cancel their enrolment after a training program has commenced will not be entitled to a refund of fees. Enrolment into a course via distance delivery will be deemed to have commenced when the learner resources have been dispatched.

Enrolment into a course via eLearning or other pre-learning material is deemed to have commenced once the learner accessed the training resources.

There will be no charge for you to transfer to another course with the original provider if a legitimate reason has been identified. If Aspen Medical Training cancels a course, a full refund will be made.

Aspen Medical Training will exercise discretion if you can demonstrate that extenuating or significant personal circumstances led to your withdrawal from a course. In these cases, you should be offered a full credit toward the tuition fees in another scheduled program instead of a refund. The nominated representative may also authorise a refund of tuition fees under certain circumstances.

Where refunds are approved, the refund must be paid to you within 14 days from the time you provide written notice to cancel your enrolment. Tuition refunds will be paid via electronic funds transfer using

the authorised bank account nominated by the learner on the Refund Request Form available on our website.

Note: If Aspen Medical Training is unable to fulfil its service agreement with you for any reason, Aspen Medical Training must refund your proportion of fees paid for services not delivered or make alternative arrangements.

For more information on our Refund and Cancellation Policy, please contact training@aspenmedical.com for assistance.

Guarantee of Training

Aspen Medical Training undertakes that in the event they are unable, for any reason, to deliver training that has been paid for in full, they will refund the course fees or make alternative arrangements.

Workplace Health and Safety

The safety of staff and clients is of primary importance. Aspen Medical Training observes all Workplace Health and Safety (WHS) legislation. Trainers incorporate WHS considerations when planning and delivering training, and you will be advised of the WHS requirements of your programs and supervised accordingly. No staff member or learner is to place themselves or other learners in a position that contradicts WHS requirements. As a learner, you have an obligation to complete your training safely and promptly report any injuries or harassment to your trainer or Aspen Medical Training Student Support Office on training@aspenmedical.com for assistance.

Aspen Medical Training is committed to providing a safe and healthy work environment for its staff, learners, contractors (trainers) and visitors. Aspen Medical Training encourages all workplace learners to regard accident prevention and work safely as a collective and individual responsibility.

Aspen Medical Training recognises its corporate responsibility under the WHS Act and Regulations. Learners, trainers and assessors share equal responsibility for ensuring the health and safety of staff, learners, contractors and visitors. In fulfilling this responsibility, trainers have a duty to provide and maintain, as far as practicable, a learning environment that is safe and without health risks.

Aspen Medical Training's responsibilities include:

- Providing and maintaining safe equipment and systems of work.
- Providing, monitoring, and maintaining systems for safe use, handling, storage, transportation, equipment, and substances.
- Maintaining the workplace in a safe and healthy environment.
- Providing adequate facilities to protect the welfare of all employees and learners.
- Providing information, training and supervision for all staff and contractors, helping them integrate WHS into their work areas and roles.
- Providing information, where relevant, to learners allowing them to learn safely and healthily.
- Checking WHS system compliance via ongoing auditing.

- Integrating continuous improvement into training - WHS performance.

Student & Participants' responsibilities for health and safety include:

- Ensuring you do not take any action that creates a risk or increases an existing risk to the health and safety of other people in the learning environment.
- Where required, wearing appropriate personal protective equipment, including eye protection, gloves and face masks.
- Using any training equipment in accordance with instructions from trainers or manufacturer's instructions.
- Protect yourself from injury by reporting pre-existing injuries to training staff and ensuring you take breaks from repetitive activities, e.g. swapping operators every two minutes when undertaking CPR.
- Taking reasonable precautions to protect yourself and others by not attending courses when you suspect you have an infectious disease. If you have been diagnosed with an infectious disease, you must notify the Aspen Healthcare Training Team.
- Not wilfully interfering with or misusing equipment or facilities provided in the interest of health, safety and welfare of Aspen Medical's Training Team

Equipment

Any equipment that is not operational, including electrical equipment, should be reported to your trainer as soon as possible. Electrical work should only be performed by a trained electrician.

Incidents/Accidents

All incidents and accidents should be immediately reported to your trainer. An incident report form will be required to be completed.

If you are involved in an incident while at your training course, inform your Aspen Medical Training educator and ensure an incident report is completed. If you require medical attention, inform your Aspen Medical Training educator, who will provide first aid and/or arrange additional medical support through the Ambulance Service.

If an Aspen Medical Training educator calls an ambulance to assist with medical treatment, you will bear the cost of the Ambulance. Certain learners may already be covered by Ambulance cover, including:

- pensioner concession and healthcare cardholders.
- Full-time learners under 26 who are covered by their family's health insurance.
- learners already covered by private health insurance.

Although you may not have called or requested an ambulance personally, an ambulance may have been called on your behalf to provide medical assistance. ACT Legislation places the legal obligation on the person receiving the ambulance service to pay the account.

First Aid

If a learner requires first aid, a trainer or First Aid Officer will administer first aid, and the learner must complete the Incident Form. If medication is required, you will be referred to your medical practitioner or nurse for advice. In the case of an emergency, staff will call an ambulance and stay with the injured or ill learner until an ambulance arrives.

Induction and Fire Safety

Housekeeping responsibilities will be explained during the induction process at the beginning of the course.

Mandatory fire and evacuation procedures for your training venue will be explained at the start of your course.

Manual Handling

While some courses require a certain level of physical ability to undertake an assessment, learners and assessors are encouraged not to lift anything during training and assessment. If a learner does so and injures themselves, they will take full responsibility for any injury caused.

Never attempt to lift anything that is beyond your capacity. Always bend the knees and keep your back straight when lifting items. If you have experienced back problems in the past, do not lift heavy objects and ask for assistance.

Access and Equity

Access and equity policies are incorporated into all operational procedures. In addition, Aspen Medical Training prohibits discrimination towards any group or individual in any form, inclusive of:

- Gender
- Physical or intellectual disability
- Psychiatric impairment
- Pregnancy
- Sexual orientation
- Race, colour, nationality, ethnic or religious background
- Age
- Marital status
- Socio-economic factors

Our training programs are designed to be flexible to maximise access and participation by all learners.

We do this by:

- Promoting access to employment and training for all people regardless of gender, socio-economic background, disability, ethnic origin, sexual orientation, age or race.
- Ensuring training services are delivered in a non-discriminatory, open and respectful manner.

- Training all staff members so that they are appropriately skilled in access and equity issues.
- Providing reasonable access to learners of all levels.
- Conducting learner selection for training opportunities that includes and reflects a diverse learner population.
- Actively encouraging the participation of those from traditionally disadvantaged groups who traditionally have been under-represented in Vocational Education and Training (VET).
- Providing culturally inclusive language, literacy and numeracy advice, and assistance that help you meet personal training goals.

Any issues or questions regarding access and equity can be directed to training@aspenmedical.com

Privacy Policy

Aspen Medical Training takes the privacy of learners very seriously and complies with the Privacy Act 1988.

As a Registered Training Organisation, Aspen Medical Training is required to collect certain information for external agencies such as the National VET Regulator and other licensing bodies to meet our compliance requirements. All information shared is kept in the strictest of confidence by both parties and is available on request. The Privacy Notice at Schedule 1 of the National VET Data Policy explains these requirements, which can be accessed through: <https://www.education.gov.au/privacy-notice>.

Change of ownership and third-party agreements

Aspen Medical Training will inform the learners in writing of any significant changes of ownership or/and changes to the service delivery and/or third-party arrangement within 90 calendar days of the change/s occurring.

Learner Data

In accordance with the Standards for RTOs 2015, Aspen Medical Training is required to capture learner data at the time of enrolment. Therefore, it is a learner's responsibility to provide accurate information when enrolling and advising in writing within seven (7) days of any change to personal details.

Additionally, Aspen Medical Training is required to confirm the identity of the learner enrolling in the course. This may involve requesting a photo ID or other documents to verify the learner's ID. Note that enrolment will not be confirmed unless the required learner data and ID proof have been collected and confirmed.

Record Management

All course results are recorded and kept in our database. Electronic files are stored for the legislated period, and are backed up regularly and stored on a protected server.

Information about contact details, financial, academic and attendance status, registration, identification, evaluations, feedback, and surveys is confidential.

Accessing your records

Learners have access to personal records upon written request to the RTO Manager at training@aspenmedical.com. Aspen Medical Training will require proof of identity to protect the privacy of all client information. Aspen Medical Training only retains learner assessment records for the mandatory minimum time frame of six months as per the ASQA requirements. Details can be found on the ASQA [website](#).

You are obligated to keep Aspen Medical Training informed of your current contact details and inform us immediately of any changes.

Complaints and Appeals

Aspen Medical Training is committed to providing a fair and transparent process for dealing with complaints and appeals. The purpose of this policy is to provide a fair, equitable, and confidential means of resolving complaints relating to Aspen Medical Training Academy. This policy applies to all RTO staff, learners, and complainants wishing to submit a complaint against another person, or a complaint against the RTO's process or system. A complaints process has been implemented to ensure that all complaints are dealt within a fair and timely manner.

A complaint is an expression of dissatisfaction, this can be against the following areas:

- a. Learner raises a complaint against another learner.
- b. Learner raises a complaint against the RTO.
- c. Learner raises a complaint against a Third Party.
- d. RTO staff raises a complaint against a Third Party.
- e. RTO staff raises a complaint against another staff member or a learner.
- f. A complaint is raised against a process of the RTO.
- g. A complaint is raised against the training equipment or resources of the RTO.
- h. A complaint is raised against the training environment or safety during Training.

If a learner, trainer, or staff member is experiencing any difficulties, they are encouraged to discuss their concerns with the Head Trainer of the RTO. The Head Trainer will make themselves available at a mutually convenient time. If a learner or staff member wishes to make a formal complaint, they may complete an AMTAF28 Complaints and Appeals Form. An AMTAF28 Complaints and Appeals Form can be submitted by completing an online submission via JotForm. The JotForm link can be requested by emailing training@aspenmedical.com or by completing an enquiry webform via our website. If required, the learner has the right to have a third party/support person assist them through the Complaints Process, this may be due to language barriers or simply at the learners' request. If a complainant decides to appeal a determination, they must request via training@aspenmedical.com a copy of, and lodge, an Application for Reconsideration of a reviewable Decision Form within ten (10) working days of receiving a final determination.

Should the complainant disagree with the result of the appeal by the RTO, a complaint can be lodged to:

- ASQA - Complaints about training providers | Australian Skills Quality Authority (ASQA)
- National Training Complaints Hotline (National Training Complaints Hotline - Department of Employment and Workplace Relations, Australian Government (dewr.gov.au))
- Phone: 13 38 73, Monday–Friday, 8am to 6pm nationally.
- This website has the online Complaints Form, as well as individual state and territory information for additional resources.

Complaints Handling Process

Aspen Medical Training Academy will:

- Acknowledge the receipt of the complaint within ten (10) working days.
- Log your complaint in a register of complaints.
- Review and investigate the complaint.
- Contact the complainant and investigate options to resolve the issue.
- Inform complainant of the progress of their complaint and of the final resolution.
- Advise complainants the avenues for further review of their complaint, if not satisfied with the outcome.

All complaints and appeals are recorded by way of a register and includes the following information:

- Details of the complainant and the nature of the complaint.
- Date lodged.
- Action taken.
- Date of resolution and reason for decision.
- Indication of complainant being noticed of outcome.
- Complainant response and any further action.

Training and Assessment Information

Diverse Learner Learning Needs

Aspen Medical Training aims to identify and respond to the learning needs of all learners. Therefore, we intend that all trainers identify their learners' learning and assessment needs before the training commences. This is conducted formally by completing a short language, literacy, numeracy and digital test.

The test will ask questions that reveal the general English level of learners, understanding of subject concepts and technical skills, previous experience and considerations regarding possible assessment formats. The trainers, when formulating their lesson, will use this information in assessment plans.

You should express your views about your learning needs at all stages of your learning experience. We want to help learners identify their learning needs through the induction and pre-enrolment processes, Learner Feedback Forms, email surveys, trainer discussion and an open invitation to approach staff with suggestions at any stage.

Learner Reasonable Adjustments

Reasonable adjustment refers to flexibility in assessment approaches to account for individual learning needs while still adhering to the assessment requirements of the relevant training package or VET accredited course. Whilst reasonable adjustments can be made in terms of how evidence of performance is gathered, the evidence criteria for making competent/not yet competent decisions should not be altered in any way.

If you meet essential entry requirements, the RTO must endeavour to make 'reasonable adjustments' necessary to complete your course work or demonstrate competency. This may include adjusting the physical environment, learner learning materials, or how a theory test is completed.

In most situations, a learner with a disability will tell the RTO what they need to study. However, if necessary, the RTO should also seek disability areas within government departments or organisations representing or providing services to people with a disability.

Adjustments may include:

- Modifying educational premises, for example, making ramps, modifying toilets and ensuring that classes are in rooms accessible to the person with a disability.
- Modifying or providing equipment, for example, lowering lab benches, enlarging computer screens, providing specific computer software or an audio loop system.
- Changing assessment procedures, for example, allowing for alternative examination methods such as oral exams or allowing additional time for someone else to write an exam for a person with a disability.
- For example, changing course delivery, providing study notes or research materials in different formats, or providing a sign language interpreter for a deaf person.

Please note that some Training Packages required mandatory skills and cannot be modified or adjusted. For example, in First aid, the learner must complete a minimum of 2 minutes of adult CPR on a manikin on the floor. Therefore, there is no room for reasonable adjustment as stated what is required in the Training Package.

Recognition of Prior Learning (RPL)

In accordance with the requirements of the Standards for RTOs 2015, Aspen Medical provides the opportunity for learners to apply to have prior learning recognised toward a qualification or unit of competency for which a learner is enrolled.

RPL is a process that assesses your competency—acquired through formal and informal learning—to determine if you meet the requirements for a unit of study.

Aspen Medical Training RTO #88188 accepts and provides opportunities for Recognition of Prior Learning (RPL) to determine eligibility for enrolment to Aspen Medical Training courses and / or Credit Transfer in accordance with the Standards for Registered Training Organisations (RTOs) 2015 and training package requirements.

Each RPL and/ or Credit Transfer Application will be reviewed in a timely manner and on a case-by-case basis. Aspen Medical's approach to granting competency for a learner through RPL and/ or CT will be evidence-based and will not unfairly advantage or disadvantage a prospective or current learner. The assessment of each RPL and/or CT application will be conducted in line with The Standards and will adhere to the Rules of Evidence and Principles of Assessment. Certain units of competency may not be eligible for recognition of prior learning (RPL). These exclusions may be due to regulatory, assessment, or practical requirements that cannot be satisfied through RPL.

A copy of Aspen Medical Training's RPL and Credit Transfer Information Kit is available at the end of the Student & Participant Handbook.

Credit Transfer Policy/National Recognition

Credit Transfer is available to all learners enrolling in Aspen Medical courses on our scope of registration.

Credit Transfer/National Recognition recognises learning achieved through formal education and training where there is a current equivalent unit on training.gov.au. Under the Standards RTOS 2015, qualifications and statements of attainment issued by any RTO are to be accepted and recognised by all other RTOs. National recognition allows a learner to be awarded a unit of competency/module based on completing the unit, which has been previously awarded. Administration fees associated with this process will be advised before the assessment of the material.

A copy of Aspen Medical Training's RPL and Credit Transfer Information Kit is available at the end of the Student & Participant Handbook.

Evidence requirements

If you seek national recognition, you are required to present your statement of attainment or qualification for examination to Aspen Medical. These documents will provide the detail of what units of competency you have been previously issued. You must provide satisfactory evidence that the statement of attainment or qualification is authentic, is yours and that an Australian RTO has issued it. Statements of attainment or qualifications should be in the correct format as outlined in the Australian Qualifications Framework. You are required to submit those copies only, which are certified as true copies of the original, with consent to verify the qualification/s provided with the issuing organisation.

National recognition guidelines

The following guidelines are to be followed in relation to national recognition:

- Any learner is entitled to apply for national recognition in a course or qualification they are currently enrolled in. Learners are required to indicate their intention to apply for recognition upon their registration into the course.
- Learners may not apply for national recognition for units of competence or qualification not included in Aspen Medical Training's scope of registration.
- Learners may apply for national recognition at any time; they are encouraged to apply before commencing a training program to reduce unnecessary training and guide the learner down a more efficient path to competence.
- National recognition may only be awarded for whole units of competency. Where a mapping guide identifies a partial credit, this will not be considered for national recognition.
- Aspen Medical Training reserves the right to verify the authenticity of all certifications with the issuing RTO.

Learners will be informed, in writing, of the outcome of their application.

Competency-Based Training

All training is based on the principles of Competency-Based Training. Delivery and assessment will involve learners accomplishing tasks required to demonstrate competency in any given unit. Learners will be provided with every opportunity to demonstrate that they can carry out required tasks.

If a learner is deemed "Not Yet Competent" in any unit, they will be provided with further attempts to demonstrate competency. This should be within one month of the initial assessment. The timing and location of the re-assessment attempt must be negotiated with your trainer.

The trainer should provide the learner with relevant feedback on areas that need further work.

Refer to the re-assessment process outlined below.

Assessment Processes

Units of competency can be assessed on the same day of delivery or afterwards, depending on the delivery mode. Units of competency delivered face-to-face, for example, are likely to be assessed on the same day as delivery.

Aspen Medical will ensure that our assessment tools meet the Rules of Evidence:

Validity

The assessor is assured that the learner has the skills, knowledge, and attributes described in the module or unit of competency and associated assessment requirements.

Any assessment decision of the RTO is justified based on the evidence of the individual learner's performance.

Validity requires:

- assessment against the unit(s) of competency and the associated assessment requirements cover the broad range of skills and knowledge that are essential to competent performance;
- assessment of knowledge and skills integrated with their practical application;
- that assessment be based on evidence to show that a learner can demonstrate these skills and knowledge in other similar situations; and
- that judgement of competence is based on evidence of learner performance, aligned to the unit/s of competency and associated assessment requirements.

Sufficiency

The assessor is assured that the quality, quantity and relevance of the assessment evidence enables a judgement to be made of a learner 's competency.

Authenticity

The assessor is assured that the evidence presented for assessment is the learner's work.

Currency

The assessor is assured that the assessment evidence demonstrates current competency. This requires the assessment evidence to be current or very recent past.

Assessment approaches will be in line with the Principles of Assessment: Fairness.

The individual learner's needs are considered in the assessment process.

The RTO applies appropriate, reasonable adjustments to consider the individual learner's needs.

The RTO informs the learner about the assessment process and allows the learner to challenge the assessment result and be reassessed, if necessary.

Flexibility

Assessment is flexible to the individual learner by:

- reflecting the learner's needs;
- assessing competencies of the learner, regardless of how or where they have been acquired; and
- drawing from a range of assessment methods and using appropriate context, the unit of competency and associated assessment requirements, and the individual.

Reliability

Evidence presented for assessment is consistently interpreted, and assessment results are comparable, irrespective of the assessor conducting the assessment.

Assessment Methods

Aspen Medical Training uses a combination of assessment methods. Some of the methods may include:

Observation: a learner is observed performing a series of tasks several times to determine their competency.

Verbal questions and answers: a learner is questioned to determine the depth of their understanding of the process to ensure that they are competent.

Written assessment: The learner can demonstrate their competency through multiple choice questions, short answer questions, written reports etc.

Other methods include case studies, projects, essays, video tasks, logbooks and third-party reports.

All assessment tasks must consider language and literacy issues or cultural issues related to the task.

Once a satisfactory performance is achieved, in all the performance criteria for a unit, the learner will be marked C for Competent; if not, they will be marked NYC for Not Yet Competent until a re-assessment occurs. If a learner cannot demonstrate competency after re-assessment, they will be marked NYC/Not Yet Competent.

Aspen Medical Training does not provide job or work placements as part of course delivery unless specified in your course information.

Assessment Completion Timeframes and Enrolment Period

All eLearning components should be completed before attending a face-to-face class. In addition, practical assessments must be completed the day you attend your class. All eLearning and assessments must be completed within 60 days of your completed Practical Assessment, or your enrolment may be cancelled. Students can reach out at any time to training@aspenmedical.com for assistance.

Applications for an extension to completion timeframes must be made, in writing, to Aspen Medical Training for review. Please email training@aspenmedical.com and detail the circumstances surrounding your request for an extension. You will receive a response in writing within seven days of your request.

For more information on individual units, qualifications, and the volume of learning within a qualification, please refer to the course overview for the particular course available on our website.

As per policy, the following will apply for the following Units of Competencies:

- HLTAID009 - Provide cardiopulmonary resuscitation
- HLTAID010 - Provide basic emergency life support
- HLTAID011 - Provide First Aid
- HLTAID012 - Provide First Aid in an education and care setting
- HLTAID013 - Provide First Aid in remote or isolated site
- HLTAID014 - Provide Advanced First Aid
- HLTAID015 - Provide advanced resuscitation and oxygen therapy
- HLTAID016 - Manage first aid services and resources
- UETDRRF004 - Perform rescue from a live LV panel

- UETDRMP007 - Perform rescue from a live low voltage panel
 - 1) **Incomplete eLearning and Knowledge Assessments:** Students have 60 days from the date of their Practical Assessment Workshop date to finalise any outstanding assessment requirements including paper-based or online based Knowledge Assessments. Upon the 60-day period lapsing, the student's enrolment may be cancelled.
 - 2) **Incomplete Practical Assessments:** Where a student has commenced or completed their paper-based and online based Knowledge Assessments and is unable to attend their scheduled Practical Assessment Workshop, a revised Practical Assessment Workshop will need to be booked within 90 days from the original Practical Assessment Workshop date. Upon the 90-day period lapsing, the student's enrolment may be cancelled.
 - 3) **Fees:** There will be no transfer or refund of Student fees by Aspen Medical Training for enrolments cancelled under this Policy.
 - 4) **Extension requests:** Any requests for extensions to these timeframes must be submitted in writing to training@aspenmedical.com for review.
 - 5) **Cancellation of Lapsed Enrolment:** The Enrolment Period for the stated units is 180 days. Where a student enrolls in a course and does not complete or does not commence the course within the enrolment period, their enrolment will be cancelled as per the Terms and Conditions of Enrolment.

Re-assessment

Stage 1: Learners undertake an in-class assessment

- Learners will be notified within 21 days of assessing their performance.

Stage 2: Learners deemed Not Yet Competent in the FIRST assessment

- Learners deemed Not Yet Competent will be provided with information identifying the areas where they failed to achieve competency.
- Learners will then have the opportunity to repeat the assessment task as soon as this can be practicably arranged with their trainer, ideally within seven days of notification.

Stage 3: Learner deemed Not Yet Competent in FIRST re-sit/re-submit

- If a learner is again deemed Not Yet Competent, they will be provided with information identifying the areas where they failed to achieve competency.
- The learner must then participate in a new assessment task within seven days of notification. An administration fee may be charged to cover the cost of supplying new resources in this case.

Stage 4: Learner deemed Not Yet Competent in SECOND re-sit/re-submit

- If a learner is still unable to demonstrate competency, the learner will be required to repeat the unit of competency.

- Re-enrolment fees may be required to be paid to your trainer before arranging the repeat of the unit of competency.
- This will be arranged directly with your trainer.

Statement of Authorship

All assessment materials, including but not limited to homework assignments, projects, reports, papers and assignments submitted to a course, are expected to be the learner's work. Learners should always take care to distinguish their ideas and knowledge from information derived from sources. The term "sources" includes published primary and secondary material and information and opinions gained directly from other people. All information taken from other sources must be referenced and authorship acknowledged. Any learner who, for whatever reason, submits work that is not their own or fails to acknowledge sources will be required to re-enrol in the relevant unit/s.

The signed learner declaration in each unit of competency is a declaration by the learner that all work contained therein is the learner's work.

Superseded Units/Qualifications

Aspen Medical Training aims to ensure that learners have every opportunity to undertake the most current national qualification. When a Training Package or UOC is superseded, Aspen Medical Training will ensure all learners are either supported to complete the course they are enrolled in or transfer them to the current training product within twelve months.

As soon as practicable, after the endorsement of the new training package, Aspen Medical Training will commence delivery of the new units of competency/qualifications. There will be a monitored review of training resources, strategies and advertising materials. Mapping old training package qualifications to new ones will be accessed, and any professional development requirements of current and prospective trainers and assessors will be identified and implemented.

During this transition period, particular attention will be paid to monitoring client feedback and implementing any changes identified as necessary in this process.

Issuance of Qualifications

Upon successful completion of a course, subject to all outstanding checking of documentation and payment of agreed fees the learner owes to Aspen Medical Training, learners will be issued the appropriate certification within 30 days of completing the training course. On completion of delivery of the units, trainers will submit Learner Results Forms to the course completion supervisor for checking and entry into the electronic data management system. In addition, learners will be eligible to receive qualifications/statement of attainments on successful course completion.

If learners do not complete all required units of competency, they will be ineligible to receive a qualification. They will, however, be eligible to receive a Statement of Attainment for the units completed within the course.

Learners enrolled in individual units of competency are required to complete all assessment tasks to a satisfactory level to be found competent and eligible for a Statement of Attainment.

All qualifications and statements of attainment will be issued without alteration and be identified by a unique number printed on the qualification or statement.

Qualifications and statements of attainment must be issued with the learner's legal name, as provided when creating their USI. For certification to be re-issued under a new name, supporting evidence, e.g. Marriage Certificate or Change of Name Certificate, will need to be provided. In addition, the learner's name will need to be updated in the USI system for the new certification to be issued.

Aspen Medical will maintain data of all qualifications/statements of attainment issued for 30 years.

Your feedback or survey reports

Your feedback is pivotal in our efforts to continue improving the services and courses on offer. Therefore, when your trainer asks you to complete a survey, please take the time to provide a considered response. Suppose, for any reason, you are unable or uncomfortable in completing the form in class. In that case, there is an additional opportunity to print a feedback form (available at the end of this Handbook), complete the form and email, fax or mail the form to us.

Successful learners will receive an email advising them that their certificate has been processed and will be allowed to respond with any additional feedback they may have regarding their training experience. We do listen and act on your suggestions for improvements.

Feedback is encouraged at any time and can be done by emailing training@aspenmedical.com or phoning (02) 6203 9500.

Quality Assurance

Aspen Medical Training is responsible for effectively monitoring training and assessment delivered on our behalf to ensure it meets the Standards for RTO's 2015. As part of Aspen Medical Training's quality assurance process, you may be contacted by a member of Aspen Medical staff and requested to complete a telephone survey to gather feedback on the delivery of our courses. You are not required to complete these surveys and may refuse at any time if contacted by Aspen Medical Training.

Industry Consultation

Industry means bodies that have a stake in the training, assessment and client services provided by RTOs. Aspen Medical Training liaises with industry representatives to confirm that the currency of all course material and training reflects industry needs. This consultation is essential so that training outcomes meet industry knowledge and skill demands and ensure proposed courses reflect future industry and employment growth. The consultation also ensures assessment strategies cover significant points and provide results that are useful to prospective employers.

Validation and Moderation

Aspen Medical Training ensures that our business model moderates all assessment tasks to guarantee that tasks and results are reliable, valid and fair - including marking procedures. Validating an assessment tool involves checking that the assessment task produces valid, reliable, sufficient, current and authentic evidence to ensure that reasonable judgment of the relevant aspects of the Training Package or accredited course have been met. It includes reviewing and making recommendations for future improvements to the assessment tool, process and/or outcomes. Assessment tasks and course results are moderated, meaning results and assessment decisions are reviewed to determine whether the tool provides consistent and reliable outcomes.

Trainers' Competencies

All assessments will be undertaken by assessors who satisfy the Standards for Registered Training Organisations (RTOs) 2015/AQTF mandatory competency requirements for assessors.

We will ensure that all our trainers and assessors will have, as a minimum, the following combination of:

- The necessary training and assessment competencies as stated in the Standards for RTOs 2015
- Relevant vocational competencies, at least to the level being assessed
- Demonstrated current industry, training and VET knowledge and skills
- Familiarity with Equal Employment Opportunity and Workplace Health and Safety principles.
- Current working with Children Check or National Police Check.

Language, Literacy and Numeracy Support

Language, literacy and numeracy skills are critical to almost all areas of work. This is particularly true in many vocations where language, literacy and numeracy skills influence workplace tasks such as measuring, weighing and comprehending written work instructions.

- To support this approach, Aspen Medical Training will:
- Assess a learner's language, literacy and numeracy skills during their enrolment to ensure they possess adequate skills to complete the training. This may be in the form of a self-assessment
- Support learners during their study with training and assessment material and strategies that are easily understood and suitable to the level of the workplace skills being delivered
- Provide clear information to learners about details of language, literacy and numeracy assistance available.
- Refer learners to external language, literacy and numeracy support services that are beyond the support available within Aspen Medical Training and where this level of support is assessed as necessary
- Negotiate an extension of time to complete training programs if necessary.
- Defer study and help with special consideration applications
- Assist in using technology for online delivery components
- Provide additional tutorials.

All delivery, assessment and instructions are conducted in English unless otherwise stated. There may be an opportunity available for 'reasonable adjustment' in the assessment process, depending on the level of support you require. This will be determined during the enrolment process.

LLN support is available to provide students with advice and support services in the provision of language, literacy and numeracy assessment services. Student's needing assistance with their learning should be identified upon enrolment. Trainers and staff within the RTO can provide students with support to assist the student throughout the learning process.

Language, Literacy and Numeracy skills are generally included and identified in Training Products and accredited course programs. In identifying language, literacy and numeracy requirements, students are required to have basic skills in:

- Count, check and record accurately
- Read and interpret
- Estimate, calculate and measure

All students undertaking training are required to undertake an LLN Assessment, unless the student currently holds a Certificate III qualification or above or can demonstrate equivalent industry experience.

Welfare and guidance services and client support

If you experience a problem with your course, you should immediately speak with your trainer, Aspen Medical Head Office (phone (02) 6203 9500) or email training@aspenmedical.com who will help you with the assistance you need.

Some examples of support that may be arranged include:

- Mentoring
- Disability support
- Telephone/email learners support
- Personal counselling
- Study Skills Program.

Student Support & Services

AMTA aims to identify and respond to the learning support needs of all participants. Therefore, we intend that all trainers identify their participants' learning and assessment needs at the start of the training. This may be accomplished informally through discussion and/or formally by completing short learning, language, and numeracy tests. To support this approach, AMTA will:

- Assess a participant's language, literacy, and numeracy skills during their enrolment to ensure they possess adequate skills to complete the training.
- Support participants during their study with training and assessment material and strategies that are easily understood and suitable to the level of the workplace skills being delivered.

- Provide clear information to participants about details of language, literacy, and numeracy assistance available.
- Negotiate an extension of time to complete training programs if necessary.
- Defer study and help with special consideration applications.
- Assist in using technology for online delivery components.
- Provide students with guidance, appropriate resources and support strategies as required

All students are encouraged to express their views about their learning needs at all stages of their learning experience from the initial enrolment and induction stage. Students are advised to discuss support needs with their trainer or a member of Aspen Medical Training in the first instance. If required, the student can then schedule an appointment with the RTO manager to discuss support services. Additionally, the Student Support Officer may be contacted on training@aspenmedical.com or by calling 02) 6203 9500 for assistance.

A copy of the Student Support Services List is available at the end of the Student & Participant Handbook.

Legislative and Regulatory Responsibilities

Aspen Medical Training operates in accordance with the law and complies with legislative and regulatory requirements.

During your day-to-day work and when participating in training, you need to be aware of relevant legislation that may impact your conduct and behaviour. To access current legislation, click on the attached link: [Federal Register of Legislation - Home Page](#)

Legislation that will sometimes apply to your day-to-day work and training are summarised below.

Work Health and Safety Act 2011

The main object of the Work Health and Safety Act 2011 is to provide for a balanced and nationally consistent framework to secure the health and safety of workers and workplaces by:

- a. protecting workers and other persons against harm to their health, safety and welfare through the elimination or minimisation of risks arising from work; and
- b. providing for fair and effective workplace representation, consultation, cooperation and issue resolution concerning work health and safety; and
- c. encouraging unions and employer organisations to take a constructive role in promoting improvements in work health and safety practices, and assisting persons conducting businesses or undertakings and workers to achieve a healthier and safer working environment; and
- d. promoting the provision of advice, information, education and training concerning work health and safety; and
- e. securing compliance with this Act through effective and appropriate compliance and enforcement measures; and

- f. ensuring appropriate scrutiny and review of actions taken by persons exercising powers and performing functions under this Act; and
- g. providing a framework for continuous improvement and progressively higher standards of work health and safety; and
- h. maintaining and strengthening the national harmonisation of laws relating to work health and safety and facilitating a consistent national approach to work health and safety in this jurisdiction.

Read more about the Work Health and Safety Act 2011 here: [Work Health and Safety Act 2011 \(legislation.gov.au\)](http://legislation.gov.au)

Privacy Act 1988 – (Australian Privacy Principles)

The Australian Privacy Principles (or APPs) are the cornerstone of the privacy protection framework in the Privacy Act 1988. They apply to any organisation or agency the Privacy Act covers.

- There are 13 Australian Privacy Principles, and they govern standards, rights and obligations around:
 - the collection, use and disclosure of personal information
 - an organisation or agency's governance and accountability
 - integrity and correction of personal information
 - the rights of individuals to access their personal information

The Australian Privacy Principles are principles-based laws. This gives an organisation or agency flexibility to tailor their personal information handling practices to their business models and the diverse needs of individuals. They are also technology-neutral, which allows them to adapt to changing technologies.

A breach of the Australian Privacy Principle is an interference with an individual's privacy and can lead to regulatory action and penalties.

Read more about the Australian Privacy Principles here: <https://www.oaic.gov.au/privacy/australian-privacy-principles/read-the-australian-privacy-principles/>

Disability Discrimination Act 1992

The objects of this Act are:

1. To eliminate, as far as possible, discrimination against persons on the ground of disability in the areas of:
 - work, accommodation, education, access to premises, clubs and sport; and
 - the provision of goods, facilities, services and land; and
 - existing laws; and
 - the administration of Commonwealth laws and programs; and

2. To ensure, as far as practicable, that persons with disabilities have the same rights to equality before the law as the rest of the community; and
3. To promote recognition and acceptance within the community, persons with disabilities have the same fundamental rights as others.

Read more about the Disability Discrimination Act 1992 here:

<https://www.legislation.gov.au/Details/C2016C00763>

Age Discrimination Act 2004

The Age Discrimination Act 2004 is an Act of the Parliament of Australia that prohibits age discrimination in many areas, including employment, education, accommodation, and goods and services. Persons of any age can be discriminated against within the meaning of the Act.

The following is a simplified outline of this Act:

- This Act makes it unlawful to discriminate on the ground of age.
- This Act affects subject to certain geographical and constitutional limitations.
- Discrimination on the ground of age can be direct or indirect.
- It is unlawful to discriminate on the ground of age in relation to work and certain other areas.
- It is not unlawful to discriminate on the ground of age if a particular exemption is applicable.
- It is an offence to do certain things related to age discrimination.

Read more about the Age Discrimination Act 2004 here:

<https://www.legislation.gov.au/Details/C2017C00341>

Sex Discrimination Act 1984

The Sex Discrimination Act 1984 gives Australia's international human rights obligations and promotes equality between women and men.

The Act protects people from unfair treatment based on their sex, sexual orientation, gender identity, intersex status, marital or relationship status, pregnancy and breastfeeding. It also protects workers with family responsibilities and makes sexual harassment against the law.

Racial Discrimination Act 1975

Racial discrimination occurs when a person is treated less favourably or not given the same opportunities as others in a similar situation because of their race, country where they were born, ethnic origin, or skin colour.

The Racial Discrimination Act 1975 (RDA) makes it unlawful to discriminate against a person because of their race, colour, descent, national origin or ethnic origin, or immigrant status.

The RDA protects people from racial discrimination in many areas of public life, including employment, education, getting or using services, renting or buying a house or unit, and accessing public places.

The RDA also makes racial hatred unlawful.

Read more about the Racial Discrimination Act [1975 here](https://www.legislation.gov.au/Details/C2016C00089):
<https://www.legislation.gov.au/Details/C2016C00089>

Copyright Act 1968

Copyright is a type of property that is founded on a person's creative skill and labour. It is designed to prevent the unauthorised use of a work, the original form in which the creator has expressed an idea or information. Copyright is not a tangible thing. Instead, it comprises a bundle of exclusive economic rights to do certain acts with an original work or other copyright subject matter. These rights include copying, publishing, communicating (e.g. broadcast, making available online), and publicly performing the copyrighted material.

There is no general exception that allows a work to be reproduced without infringing copyright. A part of a work is copied, the issue is whether a substantial portion of that work has been reproduced, and thus an infringement has occurred. However, a 10 per cent rule applies to fair dealing copying for research or study purposes. A reasonable portion of a work may be copied for that purpose, and a reasonable portion is deemed to be 10 per cent of a book of more than ten pages or 10 per cent of the words of a work in electronic form.

Read more about the [Copyright Act 1968 here](https://www.legislation.gov.au/Details/C2016C00089): [Copyright Act 1968 \(legislation.gov.au\)](https://www.legislation.gov.au/Details/C2016C00089)

Fair Work Act 2009

All people working in Australia under relevant Commonwealth workplace laws are entitled to general workplace protections.

The Fair Work Act 2009 provides protections of certain rights, including:

- workplace rights
- the right to engage in industrial activities
- the right to be free from unlawful discrimination
- the right to be free from undue influence or pressure in negotiating individual arrangements.

These rights are protected from specific unlawful actions, including (but not limited to):

- adverse action
- coercion
- misrepresentations
- undue influence or pressure concerning:
 - individual flexibility arrangements under modern awards and enterprise agreements
 - guarantees of annual earnings
 - deductions from wages.

Read more about the Fair Work Act 2009 here: [Fair Work Act 2009 \(legislation.gov.au\)](https://www.legislation.gov.au/Details/C2016C00089)

National Vocational Education and Training Regulator Act 2011

The National Vocational Education and Training Regular Act 2011 provides the basis for establishing the National VET Regulator who is the registration authority for Registered Training Organisations (RTOs).

An RTO is a training provider registered by ASQA (or a state regulator) to deliver VET services.

RTOs provide quality training and qualifications that are nationally recognised.

There are currently around 4000 RTOs in Australia. The national register, training.gov.au, maintains a complete list of RTOs.

The advantages of RTOs are:

- Only RTOs can:
 - deliver nationally recognised courses
 - deliver accredited Australian Qualifications Framework (AQF) VET qualifications
 - apply for Australian, state and territory funding to provide VET.

RTOs can offer qualifications at the following levels:

- Certificates I, II, III and IV
- Diploma
- Advanced Diploma
- Graduate Certificate
- Graduate Diploma.

Read more about the National Vocational Education and Training Regulator Act 2011 here: [National Vocational Education and Training Regulator Act 2011 \(legislation.gov.au\)](http://legislation.gov.au)

Rights and Responsibilities

Learner's Rights

Aspen Medical Training recognises that learners have the right to:

- expect high-quality training that recognises their learning styles and needs
- access all services, regardless of educational background, gender, marital status, sexual preference, race, colour, pregnancy, national origin, ethnic or socio-economic background, physical or intellectual impairment, and religious or political affiliation
- have their prior learning, acquired competencies and experience recognised in determining their requirements for training and assessment
- be advised of the learning outcomes and prescribed assessment tasks for the training program of their choice before its commencement

- appeal for a review of the results of an assessment
- expect to achieve the published learning outcomes from their training program, if they devote the necessary time and diligence to it
- learn from fully qualified and competent trainers who observe learners' learning needs, assist them in achieving course outcomes and assess learners' work fairly
- learn in a safe and clean learning environment, free of all forms of harassment and discrimination
- be treated with dignity and fairness
- expect that Aspen Medical Training will be ethical and open in their dealings, their communications and their advertising
- expect that Aspen Medical Training will maintain their duty of care to them
- efficient handling of administrative matters and in the processing of fees, concessions, refunds etc.
- privacy, confidentiality and secure storage of their records in accordance with legislative guidelines.

Learner's Responsibilities

Learners are responsible for:

- accepting the enrolment conditions for the course, they undertake
- to provide accurate information about themselves at the time of enrolment and to advise Aspen Medical of any changes to their contact details within seven days
- providing enrolment information, including proof of identity were required
- paying all fees associated with their course
- treating staff and other learners with dignity and fairness, and behaving in an appropriate manner
- ensuring they attend classes sober and drug-free, and smoke only in open areas away from other people
- learning harmoniously and positively, irrespective of gender, race, sexual preference, political affiliation, marital status, disability or religious belief
- actively participating and monitoring their progress by ensuring assessment deadlines are observed and met
- the security of their personal belongings while attending a course
- promptly report all incidents of harassment or injury to their trainer or Aspen Medical administration office
- respecting Aspen Medical's property and observing policy guidelines and instructions in the use of equipment

Punctuality

Learners should be at the course at least 15 minutes prior to the start of training. Some courses require enrolment proof of identity, and learners must be able to provide this before the commencement of a course. Failure to be punctual may preclude you from participating. Transfer to another course is possible; however, a refund in these circumstances will not be available.

Rules Ensuring Comfort and Convenience for All Learners

Alcohol is NOT permitted in the training environment. A learner who appears to be affected by alcohol is not permitted to attend the training.

Drugs are not permitted in the training environment. Anybody found having any dealing with drugs will be expelled from the course and reported to the Police. A learner who appears to be affected by drugs are not permitted to attend training.

Firearms and knives cannot be brought to the training course. Anybody found with any sort of weapon will be expelled from the course and will be reported to the Police.

Smoking is not permitted in and around the training environment.

Chewing gum is not permitted in and around the training environment.

Clothing should be comfortable and neat. We suggest overalls or long pants for learners attending practical courses such as first aid or working in confined spaces.

Litter is to be removed following cessation of classes, and there will be minor cleaning tasks required after each training session to ensure the room is left tidy.

Lipstick is not to be worn when attending first aid courses because of the stain it may leave on manikins and equipment.

As the premises of many training facilities are open to the public; learners are advised not to leave valuables unsupervised. Aspen Medical Training will not be held responsible for anything which may be stolen from training premises.

Medical Problems

Learners with medical issues that could affect their performance in a training course should advise the enrolment officer or their trainer.

Aspen Medical Training reserves the right to call an ambulance for assistance if medical assistance is required.

Mobile Phones

Do not make or receive calls or texts during training sessions. However, if you expect an urgent call, please communicate this to your trainer before the course begins.

Learner Misconduct and Disciplinary Procedures

Aspen Medical Training will not tolerate misconduct under any circumstance. A learner may be asked to leave the premises or the course without refunding or recognising competencies already achieved. Circumstances that may result in a learner being asked to leave may include:

- cheating or lying about marks or assessments
- slander of Aspen Medical Training
- plagiarising material
- failure to comply with reasonable instruction or supervision
- conduct that places others at risk
- assault to any member of staff or learner, including verbal abuse, physical abuse, or gestures
- discrimination, harassment (of any sort), disorderly conduct, disruptive, abusive or anti-social behaviour
- destruction or damage to property or premises used by Aspen Medical Training
- stealing of property or equipment belonging to a learner or Aspen Medical Training
- persistent lateness or unacceptable disruption in the classroom
- the use of profanities, coarse or obscene language, drunkenness or under the influence of illegal substances
- failure to undertake assessments as set out by Aspen Medical Training and the AQTF
- behaviour that breaches the Commonwealth Privacy Amendment Act 2014
- criminal or anti-social behaviour.

Aspen Medical Training's Harassment Policy aims to create a safe environment for staff and learners by providing access to a fair and confidential process, assisted by understanding personnel within Aspen Medical Training.

Staff and learners need to be aware of the following definitions:

'Bullying' - is unwelcome and offensive behaviour that intimidates, humiliates and/or undermines a person or group. Bullying involves a persistent pattern of behaviour over a period of time and may include verbal abuse, physical assault, unjustified criticism, sarcasm, insult, spreading false or malicious rumours, isolating or ignoring a person, putting people under unnecessary pressure with overwork or impossible deadlines, and sabotaging someone's work or their ability to do their job by not providing them with vital information and resources

'Confidentiality' - refers to information kept in trust and divulged only to those who need to know

'Discrimination' - is treating someone unfairly or unequally simply because they belong to a group or category of people. For example, equal opportunity laws prohibit discrimination based on sex, marital status, pregnancy, family responsibility, family status, race, religious beliefs, political conviction,

gender, history, impairment, age or sexual orientation. Victimization is also treated as another form of discrimination.

'Harassment' - is any unwelcome and uninvited comment or action that results in a person being intimidated, offended, humiliated or embarrassed

'Personnel' - refers to all employees of Aspen Medical

'Racial Discrimination' - occurs when a person is threatened, abused, insulted or taunted about their race, descent or nationality, colour, language or ethnic origin, or racial characteristic. It may include derogatory remarks, innuendo and slur, intolerance, mimicry or mockery, material prejudicial to a particular race, racial jokes, allocating least favourable jobs or singling out for unfair treatment.

'Sexual Harassment' - any verbal or physical sexual conduct that is unwelcome and uninvited. It may include kissing, embracing, patting, pinching, touching, leering or gestures, questions about a person's private or sexual life, requests for sexual favours, obscene jokes, phone calls, emails, facsimiles or messages, offensive noises or displays of sexually graphic or suggestive material

'Victimization' - threatening to subject a person to some form of detriment because they have made a complaint, or are believed to have made a complaint, or to have supported someone who has made a complaint

If a staff member or learner feels they have been harassed in any way, they should report it to the Training Manager or Managing Director, who will initiate an investigation. The Compliance Manager will document the concerns and keep the concerned party informed at all times as the investigation proceeds until a satisfactory outcome is achieved.

Contact Details

For further information relating to the information contained in this Student & Participant Handbook, please contact Aspen Medical Training on (02) 6203 9500 or email: training@aspenmedical.com.

Learner Questionnaire

IMPORTANT INSTRUCTIONS

Please tell us about your training. Your feedback plays an important role in developing the quality of your education. In this questionnaire, the term 'training' refers to learning experiences with your training organisation. The term 'trainer' refers to trainers, teachers, lecturers or instructors from your training organisation. Provide one response to each item on the form. Complete using a black or blue pen. Print neatly in CAPITAL letters. Place a clear 'X' inside each box. Leave the box blank if the statement does not apply. If you want to change your answer, fill in the entire box and mark the correct box with an 'X'.

Example: or

ABOUT YOUR TRAINING

	Strongly disagree	Disagree	Agree	Strongly agree
I developed the skills expected from this training.	<input type="checkbox"/>	<input type="checkbox"/>	<input type="checkbox"/>	<input type="checkbox"/>
I identified ways to build on my current knowledge and skills.	<input type="checkbox"/>	<input type="checkbox"/>	<input type="checkbox"/>	<input type="checkbox"/>
The training focused on relevant skills.	<input type="checkbox"/>	<input type="checkbox"/>	<input type="checkbox"/>	<input type="checkbox"/>
I developed the knowledge expected from this training.	<input type="checkbox"/>	<input type="checkbox"/>	<input type="checkbox"/>	<input type="checkbox"/>
The training prepared me well for work.	<input type="checkbox"/>	<input type="checkbox"/>	<input type="checkbox"/>	<input type="checkbox"/>
I set high standards for myself in this training.	<input type="checkbox"/>	<input type="checkbox"/>	<input type="checkbox"/>	<input type="checkbox"/>
The training had a good mix of theory and practice.	<input type="checkbox"/>	<input type="checkbox"/>	<input type="checkbox"/>	<input type="checkbox"/>
I looked for my own resources to help me learn.	<input type="checkbox"/>	<input type="checkbox"/>	<input type="checkbox"/>	<input type="checkbox"/>
Overall, I am satisfied with the training.	<input type="checkbox"/>	<input type="checkbox"/>	<input type="checkbox"/>	<input type="checkbox"/>
I would recommend the training organisation to others.	<input type="checkbox"/>	<input type="checkbox"/>	<input type="checkbox"/>	<input type="checkbox"/>
Training organisation staff respected my background and needs.	<input type="checkbox"/>	<input type="checkbox"/>	<input type="checkbox"/>	<input type="checkbox"/>
I pushed myself to understand things I found confusing.	<input type="checkbox"/>	<input type="checkbox"/>	<input type="checkbox"/>	<input type="checkbox"/>
Trainers had an excellent knowledge of the subject content.	<input type="checkbox"/>	<input type="checkbox"/>	<input type="checkbox"/>	<input type="checkbox"/>
I received useful feedback on my assessments.	<input type="checkbox"/>	<input type="checkbox"/>	<input type="checkbox"/>	<input type="checkbox"/>
The way I was assessed was a fair test of my skills and knowledge.	<input type="checkbox"/>	<input type="checkbox"/>	<input type="checkbox"/>	<input type="checkbox"/>
I learned to work with people.	<input type="checkbox"/>	<input type="checkbox"/>	<input type="checkbox"/>	<input type="checkbox"/>
The training was at the right level of difficulty for me.	<input type="checkbox"/>	<input type="checkbox"/>	<input type="checkbox"/>	<input type="checkbox"/>
The amount of work I had to do was reasonable.	<input type="checkbox"/>	<input type="checkbox"/>	<input type="checkbox"/>	<input type="checkbox"/>
Assessments were based on realistic activities.	<input type="checkbox"/>	<input type="checkbox"/>	<input type="checkbox"/>	<input type="checkbox"/>
It was always easy to know the standards expected.	<input type="checkbox"/>	<input type="checkbox"/>	<input type="checkbox"/>	<input type="checkbox"/>
Training facilities and materials were in good condition.	<input type="checkbox"/>	<input type="checkbox"/>	<input type="checkbox"/>	<input type="checkbox"/>
I usually had a clear idea of what was expected of me.	<input type="checkbox"/>	<input type="checkbox"/>	<input type="checkbox"/>	<input type="checkbox"/>
Trainers explained things clearly.	<input type="checkbox"/>	<input type="checkbox"/>	<input type="checkbox"/>	<input type="checkbox"/>
The training organisation had a range of services to support learners.	<input type="checkbox"/>	<input type="checkbox"/>	<input type="checkbox"/>	<input type="checkbox"/>
I learned to plan and manage my work.	<input type="checkbox"/>	<input type="checkbox"/>	<input type="checkbox"/>	<input type="checkbox"/>
The training used up-to-date equipment, facilities and materials.	<input type="checkbox"/>	<input type="checkbox"/>	<input type="checkbox"/>	<input type="checkbox"/>
I approached trainers if I needed help.	<input type="checkbox"/>	<input type="checkbox"/>	<input type="checkbox"/>	<input type="checkbox"/>
Trainers made the subject as interesting as possible.	<input type="checkbox"/>	<input type="checkbox"/>	<input type="checkbox"/>	<input type="checkbox"/>
I would recommend the training to others.	<input type="checkbox"/>	<input type="checkbox"/>	<input type="checkbox"/>	<input type="checkbox"/>
The training organisation gave appropriate recognition of existing knowledge and skills.	<input type="checkbox"/>	<input type="checkbox"/>	<input type="checkbox"/>	<input type="checkbox"/>
Training resources were available when I needed them.	<input type="checkbox"/>	<input type="checkbox"/>	<input type="checkbox"/>	<input type="checkbox"/>
I was given enough material to keep up my interest.	<input type="checkbox"/>	<input type="checkbox"/>	<input type="checkbox"/>	<input type="checkbox"/>
The training was flexible enough to meet my needs.	<input type="checkbox"/>	<input type="checkbox"/>	<input type="checkbox"/>	<input type="checkbox"/>
Trainers encouraged learners to ask questions.	<input type="checkbox"/>	<input type="checkbox"/>	<input type="checkbox"/>	<input type="checkbox"/>
Trainers made it clear right from the start what they expected from me.	<input type="checkbox"/>	<input type="checkbox"/>	<input type="checkbox"/>	<input type="checkbox"/>

What were the BEST ASPECTS of the training?

Four empty horizontal lines for text input.

What aspects of the training were MOST IN NEED OF IMPROVEMENT?

Four empty horizontal lines for text input.

YOUR TRAINING DETAILS

What TYPE OF QUALIFICATION are you currently enrolled in? Select one only.

- Certificate I []
Certificate II []
Certificate III []
Certificate IV []
Certificate level unknown []
Diploma []
Advanced diploma []
Associate degree []
Degree []
Short course or statement of attainment []
VET graduate certificate or graduate diploma []
Other qualification or training []
Do not know []

What is the BROAD FIELD of your current training? Select one only.

- Natural and physical sciences []
Information technology []
Engineering and related technologies []
Architecture and building []
Agriculture, environmental and related studies []
Health []
Education []
Management and commerce []
Society and culture []
Creative arts []
Food, hospitality and personal services []
Other []

What is the FULL TITLE of your current qualification or training?

One long empty horizontal line for text input.

In what MONTH AND YEAR did you start your current training? For example, write 'March 2007' as '03/2007'.

Month and year input boxes: [][] / [][][][]

Are you undertaking an APPRENTICESHIP OR TRAINEESHIP? Yes [] No []

Did you get any RECOGNITION OF PRIOR LEARNING towards your training such as subject exemptions, course credits or advanced standing? Yes [] No []

ABOUT YOU

Are you FEMALE OR MALE? Female [] Male []

What is YOUR AGE in years?

- Under 15 []
15 to 19 []
20 to 24 []
25 to 34 []
35 to 44 []
45 to 54 []
55 to 64 []
65 or over []

Are you of ABORIGINAL OR TORRES STRAIT ISLANDER origin?

- No []
Yes, Aboriginal []
Yes, Torres Strait Islander []
Yes, both Aboriginal and Torres Strait Islander []

Do you speak a LANGUAGE OTHER THAN ENGLISH at home? Yes [] No []

Are you a PERMANENT RESIDENT OR CITIZEN of Australia? Yes [] No []

Do you consider yourself to have a DISABILITY, IMPAIRMENT, OR LONG-TERM CONDITION? Yes [] No []

What is the POSTCODE of your main place of residence? [][][][][]

Thank you for sharing your views.

Empty rectangular box at the bottom right of the page.

Support Services List

The following list of Support Services with referrals to external providers.

Name of Organisation	Website	Phone #	Email	Client Needs Addressed
Beyond Blue	www.beyondblue.org.au	1300 224 636	https://online.beyondblue.org.au/WebModules/Email/InitialInformation.aspx	Experiencing anxiety and/or depression
Black Dog Institute	www.blackdoginstitute.org.au	(02) 9382 2991	http://www.blackdoginstitute.org.au/aboutus/contactus.cfm	Depression and Bipolar Disorder Information Australia
Kids Helpline	www.kidshelp.com.au	1800 551 800	Webchat or Email Available Online	Services for assisting children or people who are concerned about a child
Lifeline Australia	www.lifeline.org.au	13 11 14	https://www.lifeline.org.au/Get-Help/Online-Services/crisis-chat	May be in a crisis or at risk of suicide or know of someone at risk of suicide
Salvation Army	Alcohol and other drug services The Salvation Army Australia	13 72 58	Contact Us The Salvation Army Australia	Services designed to help people at all stages of recovery.
The Reading Writing Hotline	http://readingwritinghotline.edu.au/	1300 655 506	rwhotline@det.nsw.edu.au	Having difficulty with reading, writing and numeracy
Physical disability Australia	http://www.pda.org.au/	1800 732 674	Available on website	Requiring assistance with a physical disability

Deaf Australia Translating and Interpreting Service			Contact – Physical Disability Australia (pda.org.au)	
	Interpreting Deaf Connect	Available on website for your region.	Available on website Contact Us - Deaf Connect	Interpreter for those who are deaf or have hearing impairments
	http://www.visionaustralia.org/	1300 84 74 66	info@visionaustralia.org	Requires assistance due to vision impairment

Document number	AMTAP21
Version	1.1
Date of issue/revision	Feb 2025
Date of review	Feb 2028
Dev by /Reviewed by	TDCL
Approved by	RTO & LDM

Student Completion of Accredited Training Policy

1. Background

Under the Standards for RTOs 2015, Aspen Medical Pty Ltd RTO #88188 (Aspen Medical Training) is required to implement an assessment system that ensures that assessment (including recognition of prior learning):

- a) complies with the assessment requirements of the relevant training package or VET-accredited course; and
- b) is conducted in accordance with the Principles of Assessment (Table 8.1) contained and the Rules of Evidence (Table 8.2)

2. Purpose

As per the Rules of Evidence (Table 8.2), assessment evidence must demonstrate current competency, requiring the assessment evidence to be from the present or the very recent past. This policy clarifies the completion timeframe expectations as part of the Terms and Conditions of Enrolment.

This policy supports Aspen Medical Training's commitment to providing quality training by following the Rules of Evidence.

3. Scope

This policy applies to students undertaking accredited training and assessment conducted by Aspen Medical Training for the following units:

- HLTAID009 - Provide cardiopulmonary resuscitation
- HLTAID010 - Provide basic emergency life support
- HLTAID011 - Provide First Aid
- HLTAID012 - Provide First Aid in an education and care setting
- HLTAID013 - Provide First Aid in remote or isolated site
- HLTAID014 - Provide Advanced First Aid
- HLTAID015 - Provide advanced resuscitation and oxygen therapy
- HLTAID016 - Manage first aid services and resources
- UETDRRF004 - Perform rescue from a live LV panel
- UETDRMP007 - Perform rescue from a live low voltage panel

4. Definitions and Abbreviations

Assessment means the process of collecting evidence and making judgements on whether competency has been achieved, to confirm that an individual can perform to the standard required in the workplace, as specified in a training package or VET accredited course.

RTO means a Registered Training Organisation.

5. Policy

5.1 Incomplete eLearning and Knowledge Assessments

Students have 60 days from the date of their Practical Assessment Workshop date to finalise any outstanding assessment requirements including paper-based or online based Knowledge Assessments.

Upon the 60-day period lapsing, the student's enrolment may be cancelled.

5.2 Incomplete Practical Assessments

Where a student has commenced or completed their paper-based and online based Knowledge Assessments and is unable to attend their scheduled Practical Assessment Workshop, a revised Practical Assessment Workshop will need to be booked within 90 days from the original Practical Assessment Workshop date.

Upon the 90-day period lapsing, the student's enrolment may be cancelled.

5.3 Fees

There will be no transfer or refund of Student fees by Aspen Medical Training for enrolments cancelled under this Policy.

5.4 Extension requests

Any requests for extensions to these timeframes must be submitted in writing to training@aspenmedical.com for review.

5.5 Cancellation of Lapsed Enrolment

The Enrolment Period for the stated units is 180 days. Where a student enrolls in a course and does not complete or does not commence the course within the enrolment period, their enrolment will be cancelled as per the Terms and Conditions of Enrolment.

6. Responsibilities

It is the responsibility of Aspen Medical Training to notify the student of the outstanding requirements via email in the form of three reminder emails prior to their enrolment being cancelled under this Policy.

It is the responsibility of Aspen Medical Training to notify the student in writing in the form of email of the cancellation of their enrolment under this policy.

It is the responsibility of the student to ensure that at enrolment, they provide current contact details, including a contact email address, that they may be contacted on for the duration of their enrolment through to completion.

It is the responsibility of the student to provide a Unique Student Identifier, unless exempt, to Aspen Medical Training at enrolment.

Where a student is unable to attend their scheduled Practical Assessment workshop, and there are no future scheduled workshop dates where the student can attend, it is the responsibility of the student to cover the following to complete their Practical Assessment where required:

- Travel and accommodation to an approved Aspen Medical Training location
- Trainer fees should a one-on-one Practical Assessment be required
- Equipment transport

Should the student show extenuating circumstances, it is the responsibility of the student to request in writing to training@aspenmedical.com any additional time requests for completion timeframe extensions. Requests will be reviewed by Aspen Medical Training and responded to within 7 days of receipt.

8. References

Table 8.1 Principles of Assessment as per the Standards for Registered Training Organisations (RTOs) 2015

<p>Fairness</p>	<p>The individual learner’s needs are considered in the assessment process.</p> <p>Where appropriate, reasonable adjustments are applied by the RTO to take into account the individual learner’s needs.</p> <p>The RTO informs the learner about the assessment process and provides the learner with the opportunity to challenge the result of the assessment and be reassessed if necessary.</p>
<p>Flexibility</p>	<p>Assessment is flexible to the individual learner by:</p> <ul style="list-style-type: none"> • Reflecting the learner’s needs; • Assessing competencies held by the learner no matter how or where they have been acquired; and • Drawing from a range of assessment methods and using those that are appropriate to the context, the unit of competency and associated assessment requirements, and the individual.
<p>Validity</p>	<p>Any assessment decision of the RTO is justified, based on the evidence of performance of the individual learner. Validity requires:</p> <ul style="list-style-type: none"> • Assessment against the unit/s of competency and the associated assessment requirements covers the broad range

	<p>of skills and knowledge that are essential to competent performance;</p> <ul style="list-style-type: none"> • Assessment of knowledge and skills is integrated with their practical application; • Assessment to be based on evidence that demonstrates that a learner could demonstrate these skills and knowledge in other similar situations; and • Judgement of competence is based on evidence of learner performance that is aligned to the unit/s of competency and associated assessment requirements.
Reliability	Evidence presented for assessment is consistently interpreted and assessment results are comparable irrespective of the assessor conducting the assessment.

Table 8.2 Rules of Evidence as per the Standards for Registered Training Organisations (RTOs) 2015

Validity	The assessor is assured that the learner has the skills, knowledge and attributes as described in the module or unit of competency and associated assessment requirements.
Sufficiency	The assessor is assured that the quality, quantity and relevance of the assessment evidence enables a judgement to be made of a learner's competency.
Authenticity	The assessor is assured that the evidence presented for assessment is the learner's own work.
Currency	The assessor is assured that the assessment evidence demonstrates current competency. This requires the assessment evidence to be from the present or the very recent past.

Document number	AMTAM03
Version	1.0
Date of issue/revision	Aug 2024
Date of review	Aug 2027
Dev by /Reviewed by	TDC
Approved by	TAM

Recognition of Prior Learning and Credit Transfer Information Kit

wherever
we're
needed

RPL and CT Information Kit

Recognition of Prior Learning and Credit Transfer Information Kit

Information

An opportunity exists for all participants undertaking training with Aspen Medical Pty Ltd (Aspen Medical Training) RTO #88188 to apply for Recognition of Prior Learning (RPL) based on skills, knowledge, and experience gained previously. RPL will be granted when sufficient valid, current, and authentic evidence is presented to support the participant's claim of attainment of relevant competencies in accordance with our Recognition of Prior Learning and Credit Transfer Policy, and against the required standards.

The assessment of each RPL and/or Credit Transfer application will be conducted in line with The Standards and will adhere to the Rules of Evidence and Principles of Assessment. Certain units of competency may not be eligible for recognition of prior learning (RPL). These exclusions may be due to regulatory, assessment, or practical requirements that cannot be satisfied through RPL.

The following information is intended to give a participant information on the stages of the Aspen Medical Training RPL and Credit Transfer processes to ascertain if they may be a suitable candidate for RPL or Credit Transfer.

What is Recognition of Prior Learning?

RPL is an assessment process that involves assessing a candidate's relevant prior knowledge, skills and experience against the required learning outcomes, learning competencies or standards of a subject, unit module, course, or qualification, to determine credit outcomes of an individual application for credit.

Where recognition is granted via the RPL process, the candidate is given full equivalent status, equal to those who have completed the program through attendance, assessment, and a competent achievement.

The process of recognising prior learning is about:

- Alternative identifying and matching the participant's skills, knowledge and experience specific to precise standards and the associated assessment criteria of a qualification,
- Assessing the participant against those standards, and
- Crediting the participant for skills, knowledge and experience built up through formal and informal learning from the past.

What is a Credit Transfer?

A Credit Transfer is the arrangements that facilitate the movement or progression of students from one qualification or course to another, or from one learning education and training sector to another. Credit Transfer is available to all participants enrolling in Aspen Medical Training courses on our scope of Registration. This provides for the granting of credit to a participant for units of competency/modules previously completed.

Recognition of Prior Learning Process

RPL Application - Provide Information

Information regarding the opportunity to apply for RPL is available to participants through the Aspen Medical Training Academy Student and Participant Handbook, via the enrolment process and on our website.

If a participant believes they may be an eligible candidate for RPL or Credit Transfer, they should contact Aspen Medical Training via training@aspenmedical.com to enquire if they are a suitable candidate for RPL.

The candidate must complete the Self-Assessment Tool (Appendix A) as per the [Nationally Recognised Training - Aspen Medical Training Academy \(aspenmedical-trainingacademy.com.au\)](https://www.aspenmedical-trainingacademy.com.au) Once the candidate has completed a self-assessment and believes they meet the criteria, they should then review their Self-assessment Evidence (Appendix B). If the candidate believes their self-assessment has met the requirements, they can request an Enrolment Form and unit-specific AMTA20 Recognition of Prior Learning Application Form by emailing training@aspenmedical.com.

When the candidate applies for RPL, they are required to submit an Enrolment Form. An assessor will contact the candidate to discuss the evidence required. Support is always available throughout the RPL process.

Upon completing the unit-specific Recognition of Prior Learning Application Form in full and gathering the required evidence, the candidate must submit the following to training@aspenmedical.com:

1. Unit-specific Recognition of Prior Learning Application Form
2. Evidence
3. Enrolment Form

When can I apply for RPL?

You can apply for RPL at any stage throughout your training, although it is highly recommended to apply during the enrolment process or as soon as possible thereafter. You should continue to attend training until the outcome of your application has been determined.

Evidence Process

Evidence is information that supports your RPL application.

The evidence you provide of your experience and skills is required to match the specified unit's learning outcomes (s) of training competency.

All applications for RPL are governed by the principles and outcomes directly related to the participant's ability to provide evidence, which is:

- Valid – related to the qualification in question.
- Authentic – able to be verified as the applicant's own work.
- Sufficient – evidence to cover all components of the qualification or part of the qualification for which RPL is sought.

- Current – relates to current practice and legislation.
- Supported by the consistent achievement of the specified standard.

It is **the candidate's responsibility** to provide relevant evidence to support their claim for RPL.

As part of the application, all documents submitted for assessment must be certified as true copies of the original. The submitted documents will be stored for the legislated period.

Evidence older than three years will be required to be supported by evidence of a recent application in the workplace to ensure currency of practice and relevance to current practice.

In addition to reviewing your evidence, the assessor may check your current knowledge by oral, written and/or skills testing. Types of evidence are listed in the table below.

Types of Evidence	Direct Evidence	Indirect Evidence
Certificates and written records	<ul style="list-style-type: none"> • Certificates • Diplomas • Degrees • Statements of results • Courses completed at work 	<ul style="list-style-type: none"> • HR Records • Job descriptions
Work samples and supporting letters	<ul style="list-style-type: none"> • Reports • Written material • Projects 	<ul style="list-style-type: none"> • from employers • from colleagues • community groups
Records of workplace activities/resume & work history	<ul style="list-style-type: none"> • Reports • Completed worksheets • Professional Development records 	<ul style="list-style-type: none"> • A list of work history, key responsibilities, achievements, and qualifications
Skills test/referees	<ul style="list-style-type: none"> • Documentary evidence of previous experience • Undertake GAP Training 	<ul style="list-style-type: none"> • The assessor may contact you to verify your evidence

Decision-Making Process

Aspen Medical Training will process an RPL application in a timely manner. The assessor will make an assessment decision within 30 business days of the application and supporting evidence being received.

If a candidate is unsuccessful, the applicant will be advised of any application gaps, and an action plan will be recommended. A timeframe for resubmission will be provided. Applicants will have one opportunity for resubmission.

Appeals

All applicants have the right to appeal their RPL application's outcome.

- As a first step, participants should try to resolve the matter informally with Aspen Medical Training by contacting training@aspenmedical.com to discuss their concerns.

Where the outcome remains unresolved:

- The candidate should submit a written request for appeal to the RTO Manager no later than 15 business days from the notification of the application's outcome by following our appeals process. Our Complaints and Appeals Policy can be found on our website and within the Student and Participant Handbook.

Fees

A \$150 processing fee will be charged for each 'Unit of Competency' RPL or Credit Transfer application.

The candidate will be notified of any further costs during the initial conversation regarding RPL to enable them to plan their intended approach to the study.

Record Keeping and Privacy

The details of your application, supporting evidence, and your application's outcome will be recorded and stored on our Learning Management System (LMS). All information about your application will remain confidential and in accordance with the Privacy Act 1988 and the Standards for Registered Training Organisations (RTOs) 2015. You can find more information regarding our Privacy Policy on our website; within the Student and Participant Handbook or request the information via email: training@aspenmedical.com.

Appendix A: Self-Assessment

To complete a Self-Assessment, download the Unit of Competency you are seeking for RPL by visiting www.training.gov.au.

For example, if you wish to apply for RPL for “HLTAID009 - Provide cardiopulmonary resuscitation”, enter “HLTAID009” training.gov.au in your browser. Scroll down and consider the Elements and Performance Criteria, Performance Evidence and Knowledge Evidence as below:

Elements define the essential outcomes.	Performance criteria specify the level of performance needed to demonstrate achievement of the element.
1. Respond to an emergency situation	1.1 Recognise an emergency situation
	1.2 Identify, assess and minimise immediate hazards to the health and safety of self and others
	1.3 Assess the casualty and recognise the need for CPR
	1.4 Seek assistance from emergency response services
2. Perform CPR procedures	2.1 Perform cardiopulmonary resuscitation in accordance with ARC guidelines
	2.2 Display respectful behaviour towards a casualty
	2.3 Operate automated external defibrillator (AED) according to the manufacturer's instructions
3. Communicate details of the incident	3.1 Accurately convey incident details to emergency response services
	3.2 Report details of the incident to workplace supervisor as appropriate
	3.3 Maintain confidentiality of records and information in line with statutory and/or organisational policies

Performance Evidence

The participant must provide evidence of their ability to complete tasks outlined in the elements and performance criteria of this unit and manage tasks and contingencies in the context of the job role.

Evidence must be provided, demonstrating that the participant has completed the following tasks in line with state/territory regulations, first aid codes of practice, Australian Resuscitation Council (ARC) guidelines and workplace procedures:

- Followed DRSABCD in line with ARC guidelines, including:
 - performed at least two minutes of uninterrupted single rescuer cardiopulmonary resuscitation (CPR) (five cycles of both compressions and ventilations) on an adult resuscitation manikin placed on the floor
 - performed at least two minutes of uninterrupted single rescuer CPR (five cycles, both compressions and ventilations) on an infant resuscitation manikin placed on a firm surface
 - responded appropriately in the event of regurgitation or vomiting
 - managed the unconscious breathing casualty
 - followed single rescue procedure, including the demonstration of a rotation of operators with minimal interruptions to compressions
 - followed the prompts of an automated external defibrillator (AED)
- Responded to at least one simulated first aid scenario contextualised to the participant's workplace/community setting, including:
 - demonstrated safe manual handling techniques
 - provided an accurate verbal or written report of the incident.

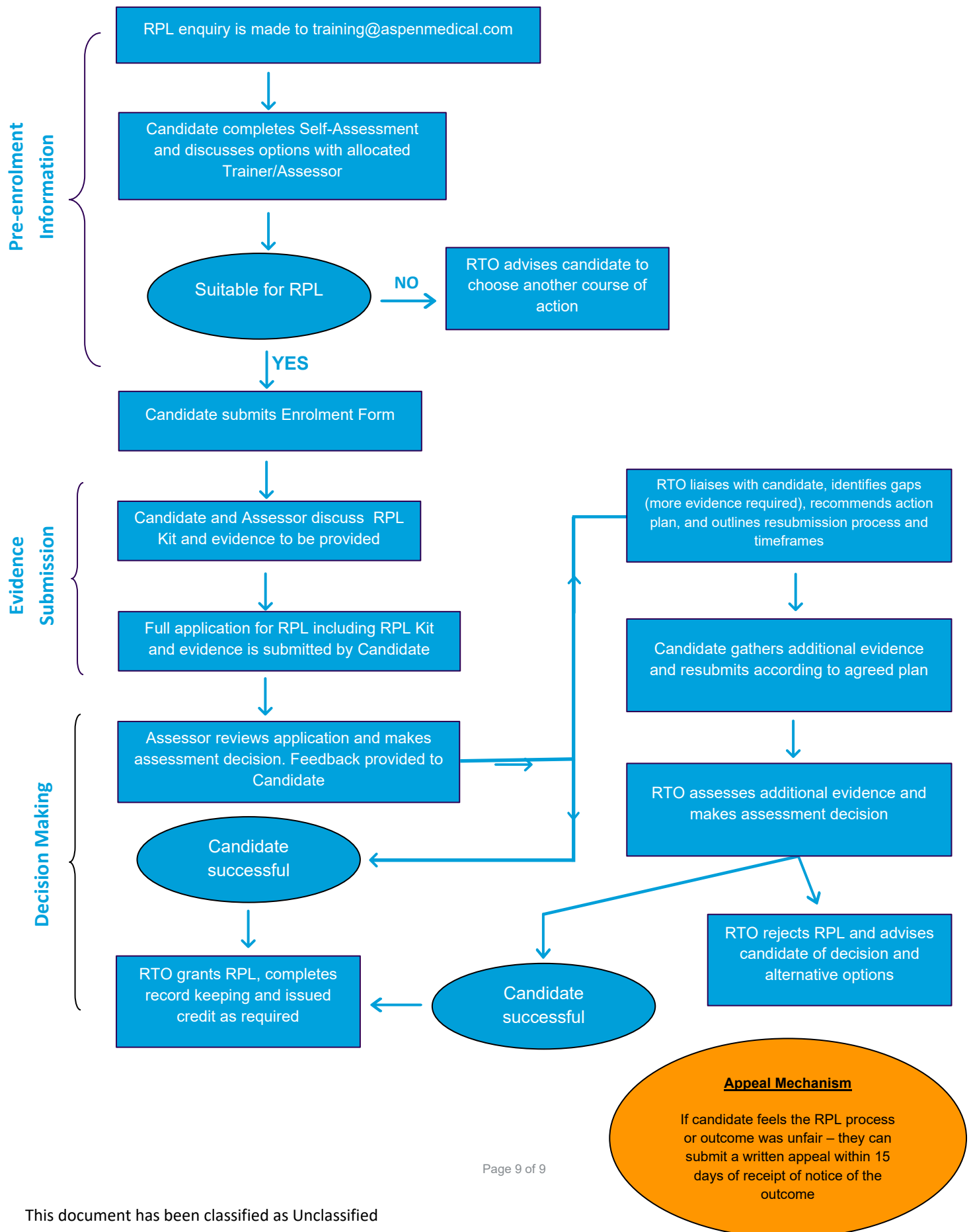
Appendix B – Self-Assessment Evidence

- **Self-assessment evidence example for unit “HLTAID009 - Provide cardiopulmonary resuscitation”:**

HLTAID009 - Provide cardiopulmonary resuscitation	Do you have the following: <ul style="list-style-type: none">• Evidence of applicant's involvement in using CPR in their workplace AND/OR• Higher education demonstrating knowledge principles and application of CPR AND/OR• Written references from a current or previous employer(s) AND/OR• Nursing, paramedical, or medical qualifications AND/OR• Third-party verification that the participant has obtained correctly interpreted and used anatomical and physiological client information to check the physical health status of at least three different people presenting with different conditions
---	---

If you believe your self-assessment has met the requirements, email training@aspenmedical.com to request a unit specific RPL Application Form. Alternatively, you can discuss your application in confidence with Aspen Medical Training.

The following Flow Chart can be used as a reference for the RPL process.



Document number	AMTAP10
Version	5.0
Date of issue/revision	Oct 2024
Date of review	Oct 2027
Dev by /Reviewed by	RTO CO
Approved by	AMTAM

Unique Student Identifier Policy

1. Policy

Aspen Medical Pty Ltd RTO #88188 (Aspen Medical Training) as a Registered Training organisation requires all students undertaking Nationally Recognised Training to provide a valid Unique Student Identifier (USI), unless exempt. Aspen Medical Training will not issue any AQF qualification or Statement of Attainment without being in receipt of a verified USI for that student, unless an exemption has been applied under the Student Identifiers Act 2014.

2. Privacy

Aspen Medical Training collects student information to meet service requirements and comply with the National Standards for RTOs 2015 and NCVER reporting. Aspen Medical Training holds personal information to ensure the security and integrity of the information is maintained and that prevents unauthorised access or use. For more information, this policy should be read in conjunction with our Privacy Policy.

3. Definitions

Term	Meaning
AQF	Australian Qualifications Framework – A government body that specifies the standards for educational qualifications in Australia.
RTO	Registered Training Organisation – A provider of accredited VET courses that can assist applicants in obtaining a USI can verify a USI and access educational information with the student's permission.
Student	A person undertaking Vocational Education and Training and who will require a USI from January 2015
USI	Unique Student Identifier – An exclusive ten-digit number consisting of letters and numbers and linking a student's USI account to their training records.

4. Background

All students applying to attend training with Aspen Medical Training must obtain their USI on their own and provide the details to the Aspen Medical Training team for recording and verification. A USI is necessary to issue the Statement of Attainment and/or Certificates upon completion of all the course requirements.

Aspen Medical Training will record a USI for their students at the time of enrolment.

Aspen Medical Training must ensure that they have recorded a valid USI for each student when they report on training activities or issue an AQF certification document, such as a qualification, statement of attainment or testamur.

Students only need to create a USI once, and Aspen Medical Training is only required to verify USI Students once.

5. References

- Unique Student Identifier Website - <http://www.usi.gov.au/Pages/default.aspx>
- Australian Government ComLaw - <http://www.comlaw.gov.au/Details/C2014A00036>